



**Providence
Health Care**
How you want to be treated.

**PHC Medical Staff
Association**



PHC Physicians
& Surgeons



**FACILITY
ENGAGEMENT**
Specialist Services Committee

Medical Staff Engagement at Providence Health Care

Our Medical Staff Community & Voice





What is medical staff engagement?

Our Community

Active participation in a connected, collaborative, supportive medical community of peers

Our Voice

Heard and valued in the activities, plans and decisions of our health authority on our workplace and patient care

We are promoting meaningful medical staff engagement at Providence Health Care to support clinical, research and teaching excellence to best serve our patients and families, and to transform health care.

Participation in Facility Engagement

- A provincial initiative for facility-based medical staff across BC
- Annual funding for Providence from Doctors of BC Specialist Services Committee (\$500 K)
- Part of the physician Master Agreement
- **AIM:** Promote meaningful consultation and collaboration among facility-based medical staff and health authorities
- Work together on shared priorities impacting our workplace and patient care.



**Providence
Health Care**



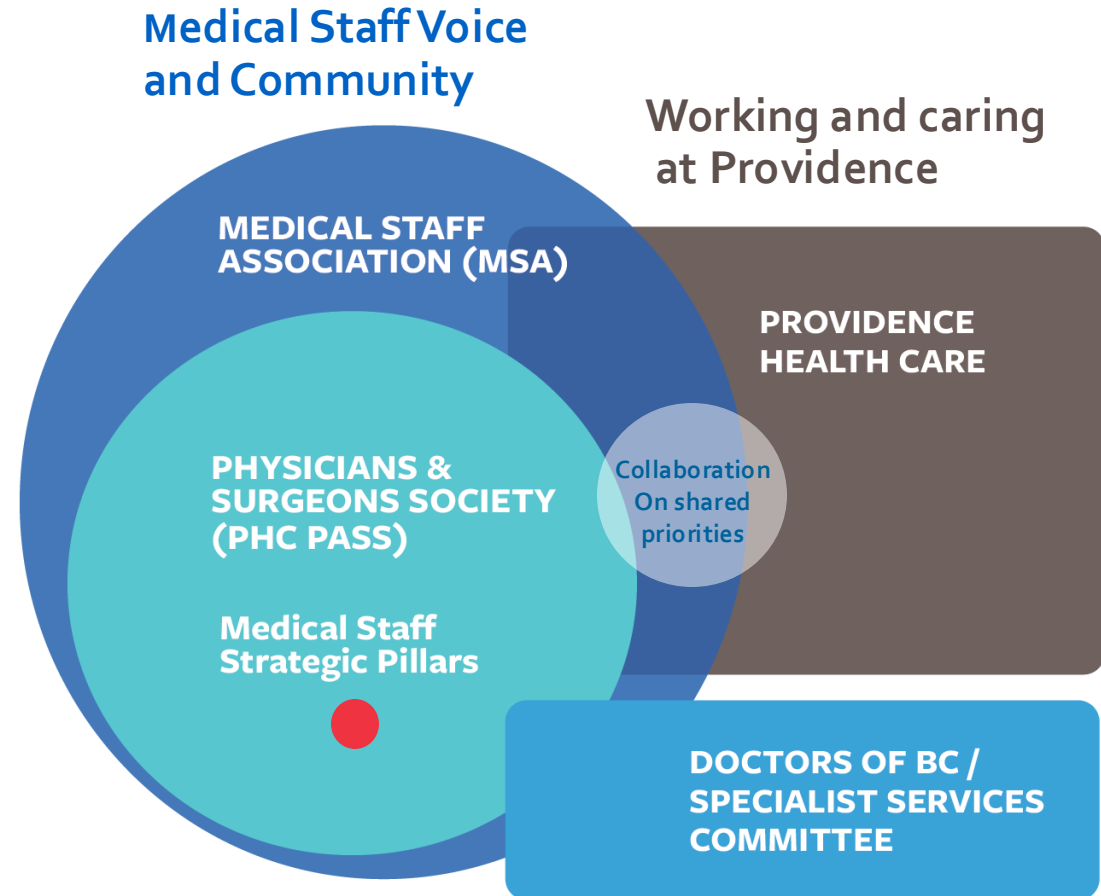
1100+ PHC Medical Staff
Approx 850 full time

- **St. Paul's Hospital**
- **Mount Saint Joseph**
- **Holy Family**

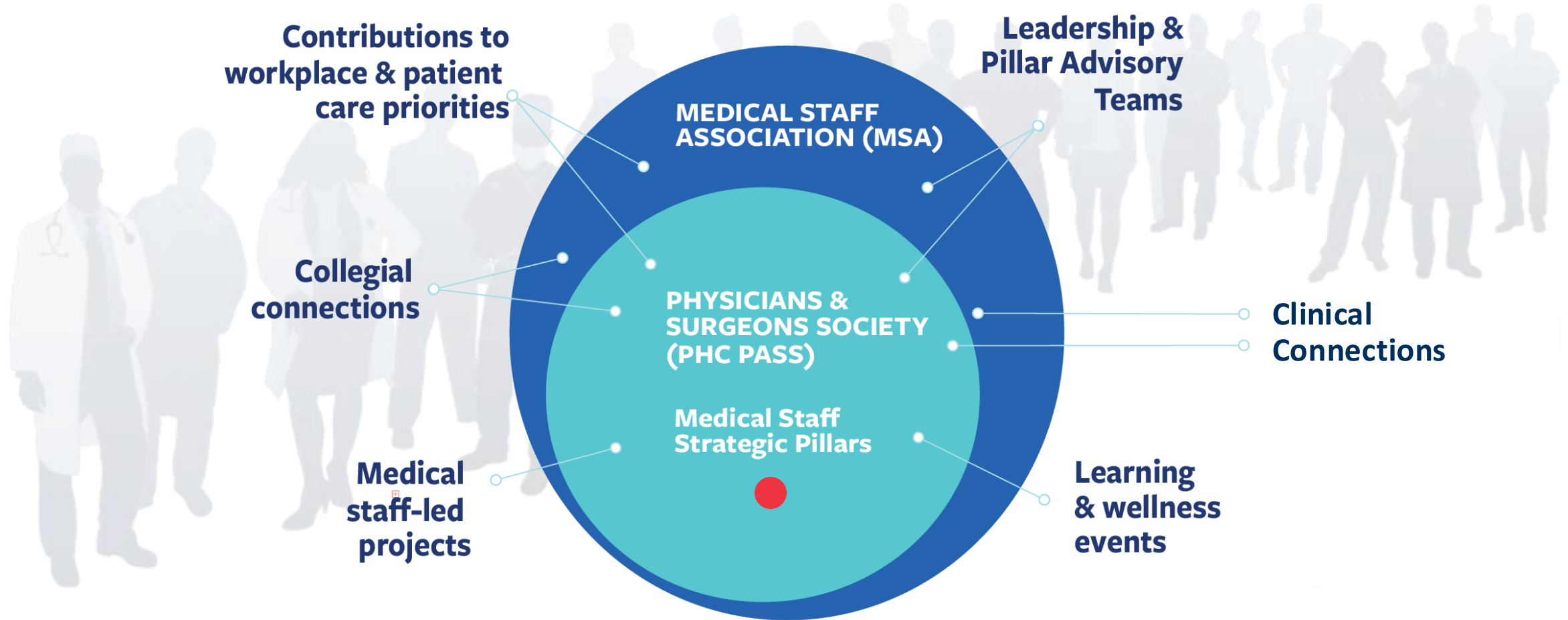
Medical Staff Association (MSA) + PHC Physicians & Surgeons Society (PHC-PASS)

Combined leadership, executive:

- Oversees Facility Engagement activities and funding on behalf of medical staff
- Advocates for medical staff: raising issues, representing medical staff perspectives in PHC decision-making and governance
- MSA collects member dues



Opportunities for you



PHC-PASS – Facility Engagement: Member Priorities

Medical Staff Wellness



Social Capacity Building

Connecting People
Physician Leadership



Planetary Health &
Environmental Sustainability



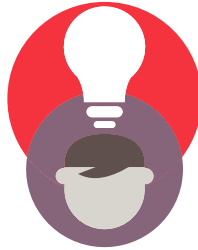
Medical Staff Projects
to advance Strategic Pillars



Medical Staff Pillar Advisory Committees



QUALITY-FORWARD
Exceptional Quality, Safety & Value



LEARNING-FORWARD
Discover, Learn & Innovate for Impact



PEOPLE-FORWARD
Inspiring People & Teams



PARTNERSHIPS-FORWARD
Partner to Transform Health Care

- 4 Physician consultant leads
- 22 medical staff advisors
- 5 Providence Senior Leader partners



Quality-Forward

Exceptional Quality, Safety & Value

Coordinating opportunities
and learning for patient
quality and safety



Quality Pillar Advisory Committee (L to R): Dr. Trina Montemurro (Consultant Lead), Dr. Janet Kow (PHC VP Sponsor) and Medical Staff Advisors Dr. Hayley Merkeley, Dr. Shanta Chakrabarti, Dr. Keeva Lupton
Not pictured: Dr. Andrew Kestler, Dr. Bonnie Law, Dr. Nathaniel Winata



People-Forward

Inspiring People & Teams

Supporting medical staff
wellness, connections, and
community



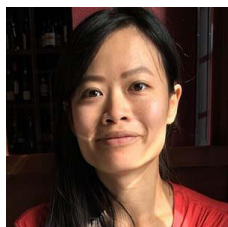
People Pillar Advisory Committee (L to R): Dr. Ana-Luiza Sayao (Consultant Lead), Becky Palmer (PHC VP Sponsor), Medical Staff Advisors: Dr. Lawrence Cheng, Dr. Shanta Chakrabarti, Dr. Joe Finkler, Dr. Debbie Rosenbaum, Dr. Vishal Varshney (Past Pillar Consultant Lead)



Partnerships-Forward

Partner to Transform Health Care

Coordinating clinical
partnerships, connections,
partners and learning for
patient care



Partnerships Pillar Advisory Committee (L to R):

Dr. Grace Li (Consultant Lead), Deborah Mitchell (PHCVP Sponsor).

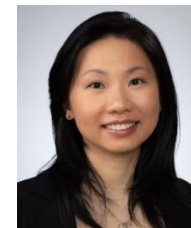
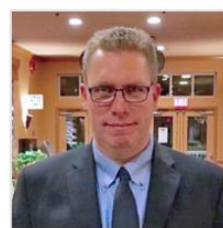
Medical Staff Advisors: Dr. Lik Hang Lee, Dr. Ron Ree.



Learning-Forward

Discover, Learn & Innovate for Impact

Connecting opportunities,
support and community
for medical staff
innovation

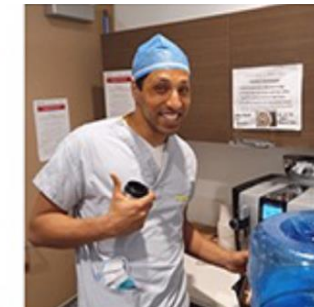


Learning Pillar (Discover, Learn and Innovate for Impact) Advisory Committee (L to R):

Dr. Lik Hang Lee (Consultant Lead), Dr. Darryl Knight (PHCVP Sponsor) Brian Simmers (PHC VP Health Informatics; President, PHC Ventures). Medical Staff Advisors: Dr. Ron Ree, Dr. Sam Wiseman, Dr. Jesse Greiner, Dr. Janny Ke, Dr. Jonathan Dick. *Not pictured:* Dr. Douglas Motomura. Dr. Charles Yu

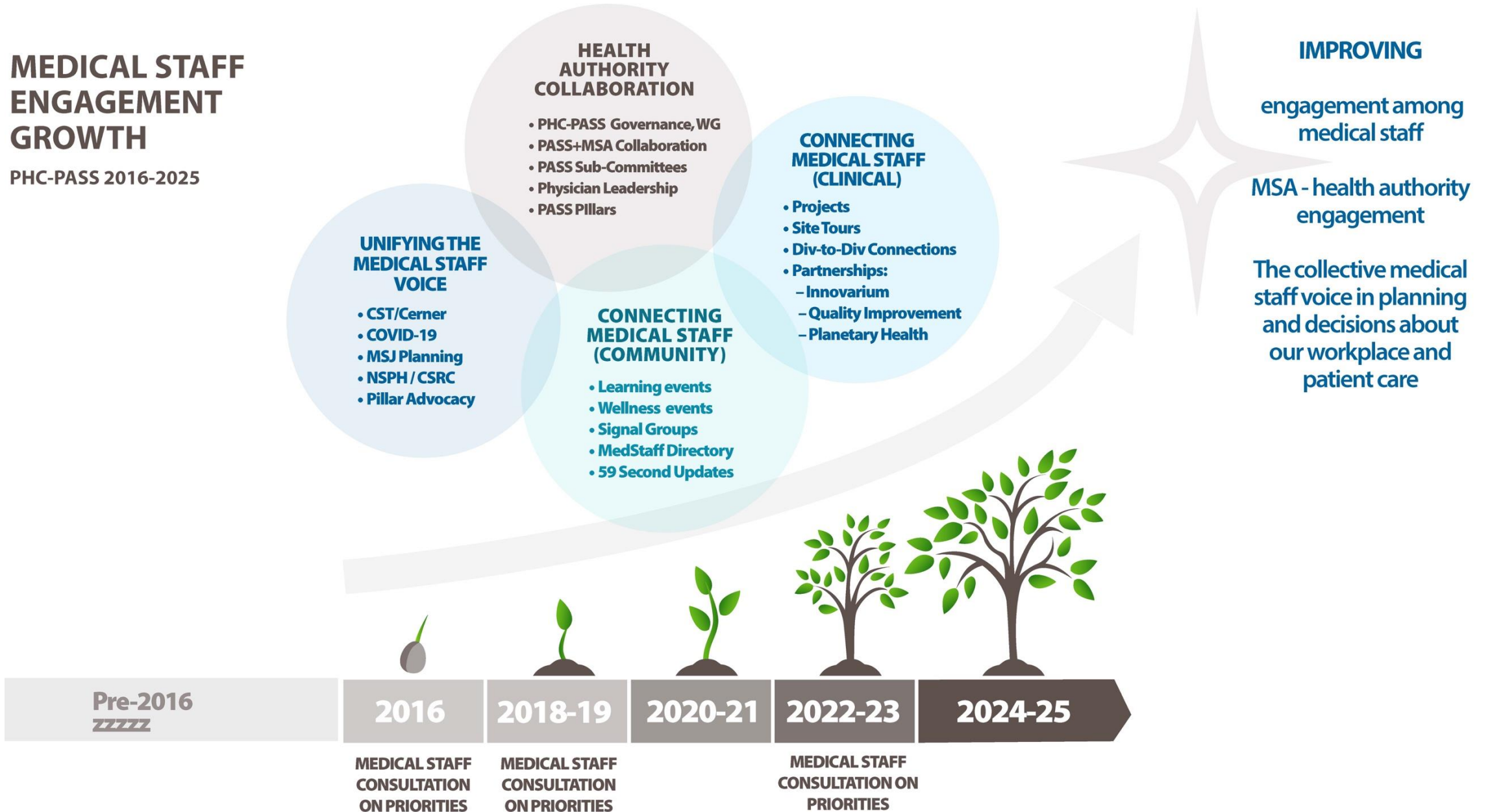
Impact: Engagement has fostered...

- Increased collegial connections from across specialties and sites
- Open, productive relationships with our senior health authority leaders
- Incubation of many new physician leaders to represent medical staff at senior tables
- Creation of 4 Medical Staff Pillars and Advisory Teams for member engagement, aligning with health authority priorities
- Advancement of medical staff-led projects for workplace/ and patient care
- Active participation in planning for the Jim Pattison health campus and future MSJ



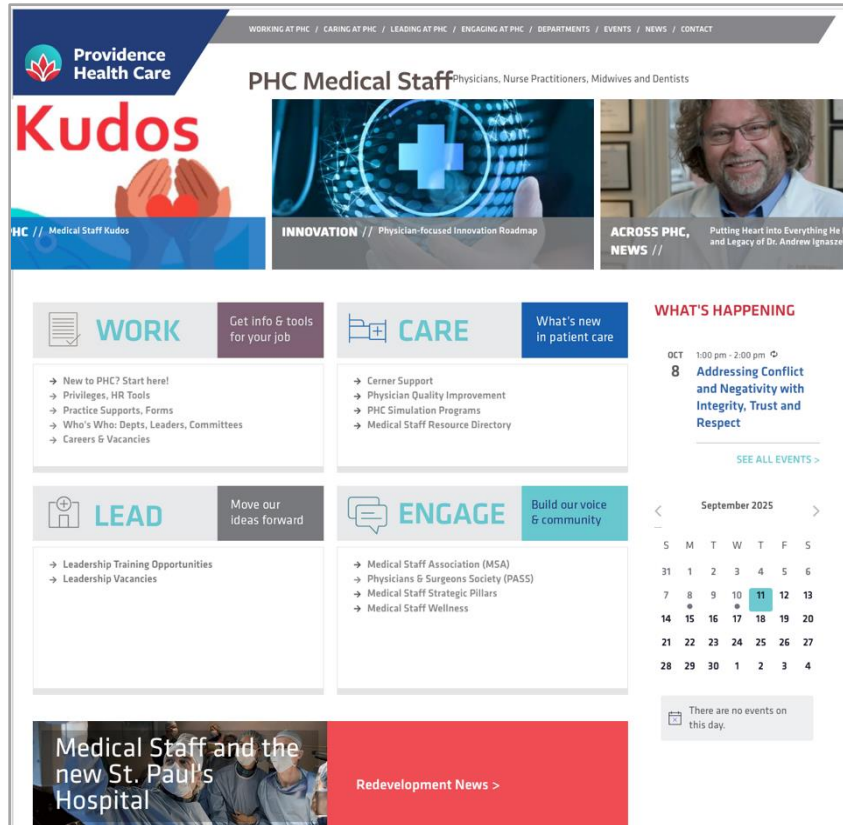
MEDICAL STAFF ENGAGEMENT GROWTH

PHC-PASS 2016-2025



Staying connected: Medical staff communications

Medical Staff Website
www.phcmedstaff.ca



2 x monthly
updates for
medical staff
by e-mail



Signal chat groups
Join colleagues for secure, private conversations

- PHC Med Staff Open Mic Chat
- Planetary Health PHC MSA Network
- Discover, Learn & Innovate / Innovarium 360°
- PHC MSA CST Informatics Chat (Cerner)

Request invitation: pass@providencehealth.bc.ca