



Providence Health Care

How you want to be treated.

Providence Health Care (PHC) Medical Staff Orientation Program:

Medical Staff Orientation Manual

PHC Physicians and Surgeons Association (PASS)

Facility Engagement: Building medical staff voice and community at Providence Health Care

*Prepared by Medical Affairs, PHC
in collaboration with Leaders and Staff from across the Organization*

*Please refer to the PHC Medical Staff website for copies of important documents such as PHC Medical Staff Rules, Bylaws, and Medical-Staff-related policies
<http://phcmedicalstaff.ca>*



Facility Engagement at Providence Health Care: Strengthening the Voice of Physicians

Dr. Julia Raudzus
President
PHC PASS

Dr. Tracy Scott
Vice President
PHC PASS

Dr. Lik Hang Lee
Secretary-Treasurer
PHC PASS

Our vision

Promoting meaningful facility engagement to make Providence Health Care an organization of clinical, research, and teaching excellence to best serve our patients and their families and transform health care.

[Facility Engagement](#) started at PHC in late 2015 as part of the Physician Master Agreement and province-wide initiative to improve meaningful engagement between physicians working in acute care facilities and their health authorities.

Annual funding is provided through the Specialist Services Committee for engagement activities that increase communication and collaboration among medical staff and involve physicians in health authority planning and decision-making about our workplace and patient care.

Oversight of Facility Engagement at PHC

At PHC, oversight and funds for Facility Engagement are managed by the **Providence Health Care Physicians and Surgeons Society (PHC PASS)** a non-profit association that operates under executive direction of our [Medical Staff Association](#).

PHC PASS is led by Drs **Julia Raudzus** (Board President), **Tracy Scott** (Vice-President), and **Lik Hang Lee** (Treasurer).

The Working Group meets the second Tuesday of every month from 4:30-6:00 PM.

Under the PHC PASS, the **Physician Engagement Working Group** was established to carry out Facility Engagement activities at PHC sites and comprises physician members who are representative of the medical staff and include the following physicians:

Julia Raudzus (Chair)	Amin Sajan	Elliott Weiss
Tracy Scott	Vishal Varshney	Tom Tang
Lik Hang Lee	Grace Li	Emile Woo
Moira Stilwell	Howard Chang	Lisa Li
Hin Hin Ko	Jeff Pike	Victor Leung
Shanta Chakrabarti	Jennifer Telford	Monique Radlein
Adrienne Melck	Elisabet Joa	Elisabeth White

PASS Board Members

Julia Raudzus - President
Tracy Scott - Vice-President
Lik Hang Lee - Treasurer
Moira Stilwell - Director
Hin Hin Ko - Director
Shanta Chakrabarti - Director

Sub-Committee Chairs

Moira Stilwell - Governance; Sustainability

Strategic Pillar Leads

Adrienne Melck – Exceptional Quality, Safety & Value
Amin Sajan – Discover, Learn & Innovate for Impact
Grace Li – Partner to Transform Health Care
Vishal Varshney – Inspiring People & Teams

Primary Care Community Connectedness Physician Lead
Howard Chang

MSA Executives

Elisabet Joa - President
Elliott Weiss - Vice-President
Tom Tang - Treasurer
Victor Leung - Past President
Emile Woo - MSEC Member
Santa Chakrabarti - MSEC Member
Hin Hin Ko - MSEC Member

NSPH Physician Directors

Jeff Pike - Clinical Support and Research Centre
Amin Sajan - Acute

Doctors of BC

Elisabeth White - Senior Regional Advisor & Advocate

PHC Medical Affairs

Monique Radlein - Executive Director

Strategic Pillar Leads were created to represent and align medical staff priorities with the 4 high level priorities of PHC's 7 Year Strategic Plan. Each Strategic Pillar Lead is supported by their respective Pillar Advisory Committees (PACs) comprised of PHC medical staff. In addition to the PAC, each Pillar Lead works closely with an Executive Sponsor appointed by PHC. Additional PACs have and may be created as deemed necessary by the Board and WG.

MSA-PASS Synergy Chart

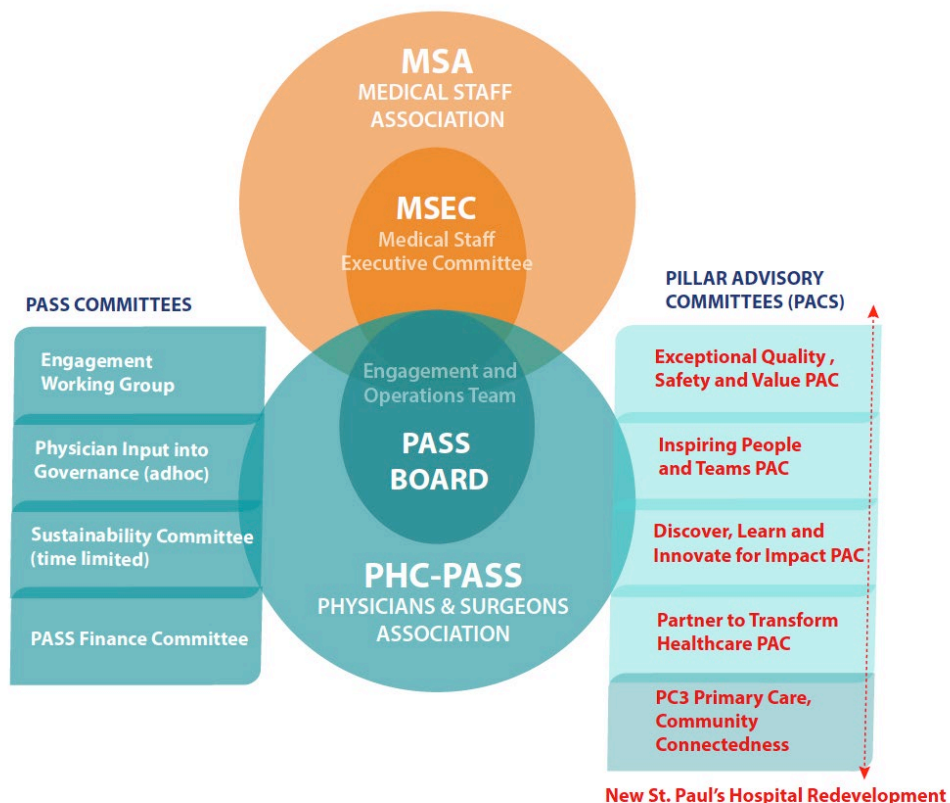
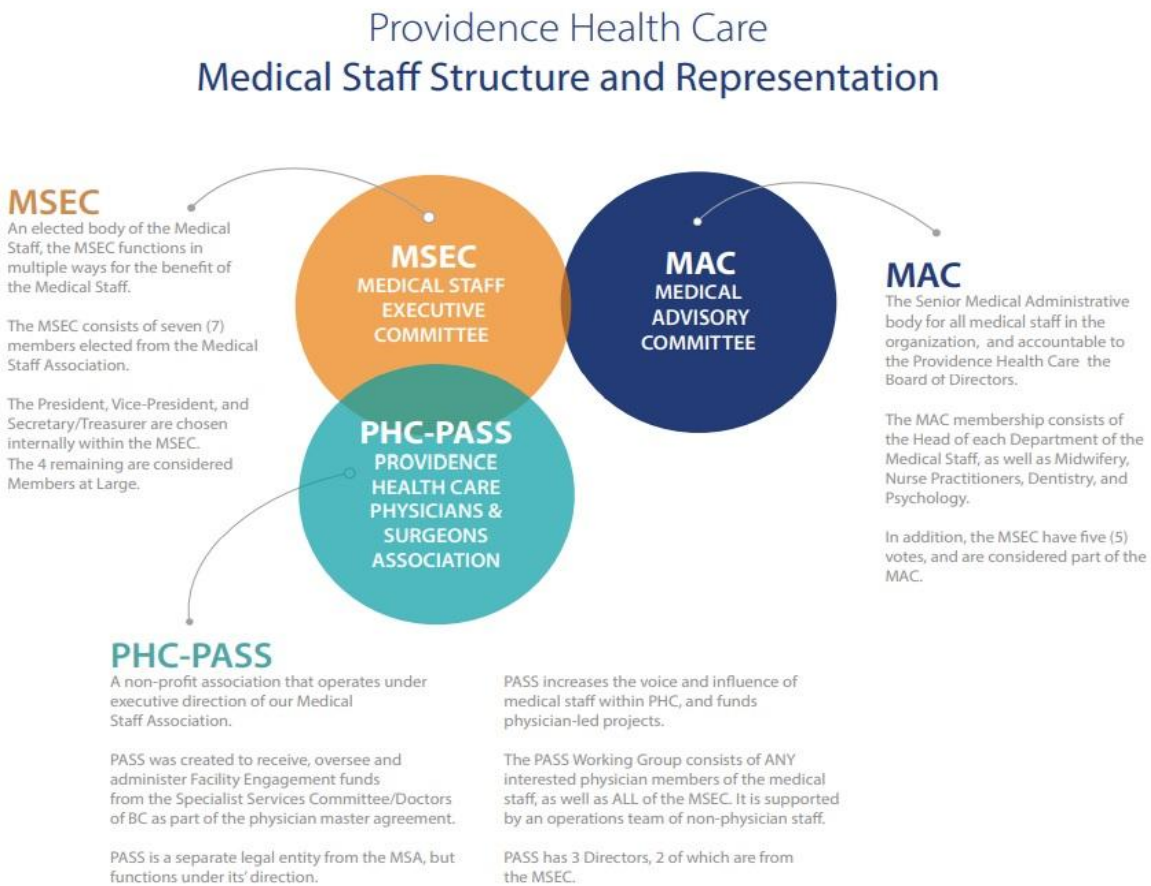
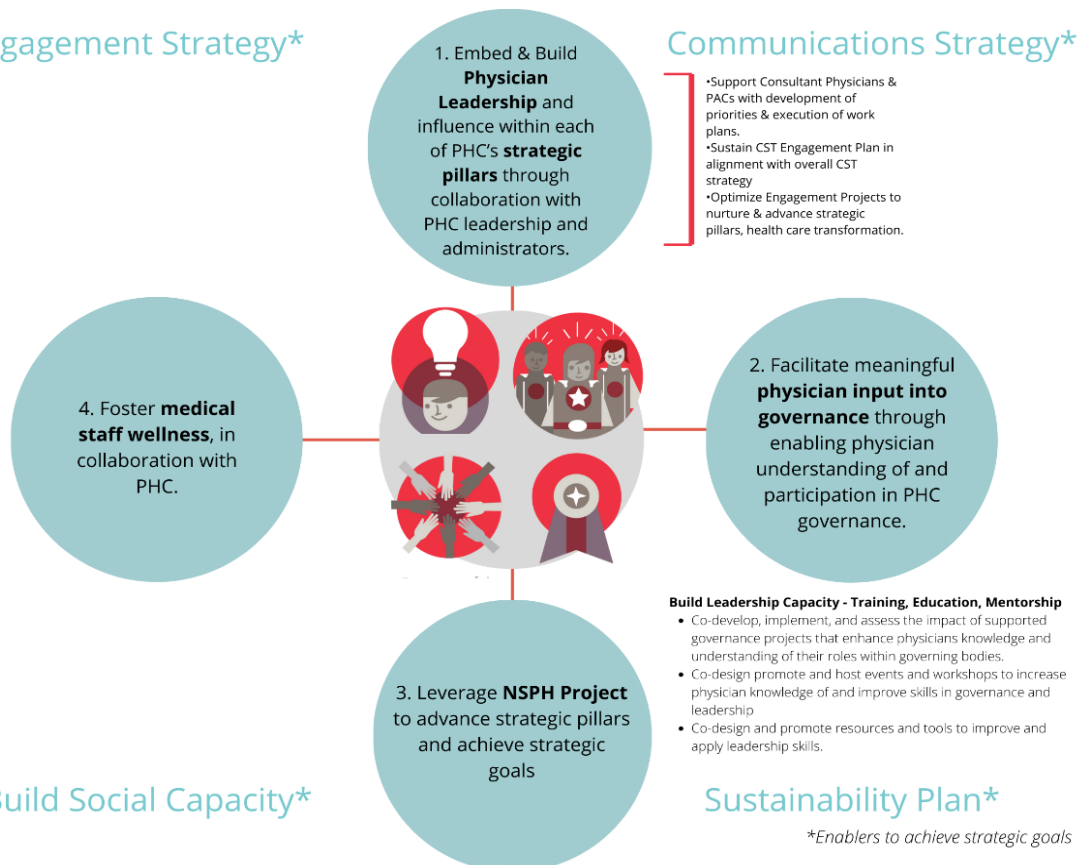


Figure 1. Relationship between the representative bodies of the Medical Staff.



Engagement Strategy*



How to get involved?

Get involved and stay in touch!

- Sign up for the 59 Second Update to see engagement opportunities and relevant medical staff news ([here>](#))
- Visit our Medical Staff Website ([here>](#))
- Stay up to date and join the Medical Staff Facebook & Instagram, both @PHCMedStaff
- Join the [Slack](#) discussion forum for conversations, meeting agendas and minutes
- Visit [missionforward.ca](#) for all strategic plan-related information, regarding Providence's 7-year strategic plan, Mission: Forward.

- Contact pass@providencehealth.bc.ca to find out more